

Social Value / Charitable Donation of Electrical Works

CASE STUDY - Daylight Centre - Wellingborough

Crystal



www.crystalelectronics.co.uk

Client: The Daylight Centre

Project Type: Social Value / Charitable Donation of Electrical Works

Duration: 2 days

Team: 2 engineers

Cost to client: Zero — all works fully donated by Crystal Electronics Ltd



Overview

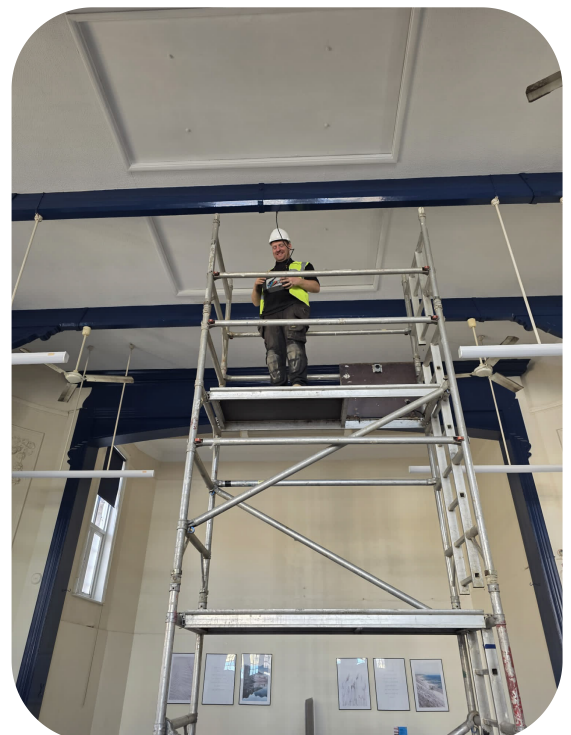
At Crystal Electronics Ltd, social value is not a box to tick — it is part of who we are. In a recent demonstration of that commitment, our team donated a full package of electrical works to The Daylight Centre, a local charitable community hub for the homeless. From ceiling-mounted projector installations to external floodlighting and security improvements, every hour of labour and every piece of material was given freely, at no cost to the Centre whatsoever.

In just two working days, a two-person engineering team delivered a multi-discipline program of works that has meaningfully enhanced the facilities available to the community The Daylight Centre serves.

The Challenge

The Daylight Centre needed a range of electrical improvements to bring their facilities up to the standard the community deserves — but, as a charitable organization, the budget to commission this kind of professional, accredited electrical work simply was not available.

The scope presented its own technical demands. Chief among them was the installation of a ceiling-mounted projector in a room with significant ceiling height, requiring the erection of high-rise scaffolding to allow safe working at height. Alongside this, the team needed to address deteriorating external infrastructure — conduit on the roof area had worked loose and required full replacement — while also delivering new power provision, floodlighting, and security lighting across the building. This was not a simple, single-trade job. It called for a versatile team with the depth of skills, accreditations, and equipment to safely deliver complex works across multiple disciplines.



Social Value / Charitable Donation of Electrical Works For The Daylight Centre

CASE STUDY - Daylight Centre - Wellingborough

Crystal



www.crystalelectronics.co.uk

Our Solution

Crystal Electronics Ltd mobilised a two-engineer team, equipped with the full range of tools and materials needed to complete every element of the works in a single planned visit. With 150+ qualified engineers across our national network and 40 years of experience behind us, this kind of multi-discipline project is precisely what our teams do every day — for housing associations, councils, and commercial clients alike.

We donated the project in its entirety: planning, labour, materials, and equipment.



The Works

Over two days, the team completed the following:

- **Ceiling-mounted projector installation** — the most technically demanding element of the project. High-rise scaffolding was erected to safely reach the ceiling height, and the installation itself took four hours to complete to the exacting standard our engineers hold themselves to.
- **External floodlight installation** — providing improved lighting around the exterior of the building for safety and usability.
- **Internal power points for laptops** — new socket provision to support the day-to-day digital needs of the Centre and its users.
- **Security lights installation** — enhancing the safety and security of the site after hours.
- **External conduit repairs (roof area)** — the existing conduit had deteriorated and was coming away from the structure. The team stripped out the failing installation and replaced it fully, restoring the integrity of the external electrical infrastructure.

The Outcome

All works were completed safely, on time, and to the high standard Crystal Electronics Ltd brings to every project — whether that project is for a major housing association or a community charity receiving donated works.

The Daylight Centre couldn't be happier. The improvements have transformed the practical capabilities of the Centre, providing better lighting, improved security, modern power provision, and a fully functioning projection facility for community events and activities.



Social Value / Charitable Donation of Electrical Works For The Daylight Centre

CASE STUDY - Daylight Centre - Wellingborough

Crystal



www.crystalelectronics.co.uk

Social Value Statement

Community matters. Crystal Electronics Ltd was founded over 40 years ago and has grown through the decades by being a trusted, reliable partner to the organisations we serve. But our responsibility does not end with our clients — it extends to the communities in which we, and the people we work alongside, live and work.

Donating our professional services to The Daylight Centre was a privilege. Projects like this reflect the values at the heart of our Employee Ownership Trust: that the success of our business should benefit the people around us, not just those within it.

We are proud to support the vital work that community organisations like The Daylight Centre carry out every day, and we remain committed to finding further opportunities to give back through the skills and expertise our team has spent decades developing.



Crystal Electronics Ltd

National electrical contractor with 150+ qualified engineers, serving housing associations, councils, and commercial clients across the UK for over 40 years. Accreditations include NICEIC, SMAS, Constructionline Gold, and Safe Contractor.

For enquiries about our services or social value programme, visit www.crystalelectronics.co.uk.

Speak to our team about a safe, low-disruption program.

01933 226410

